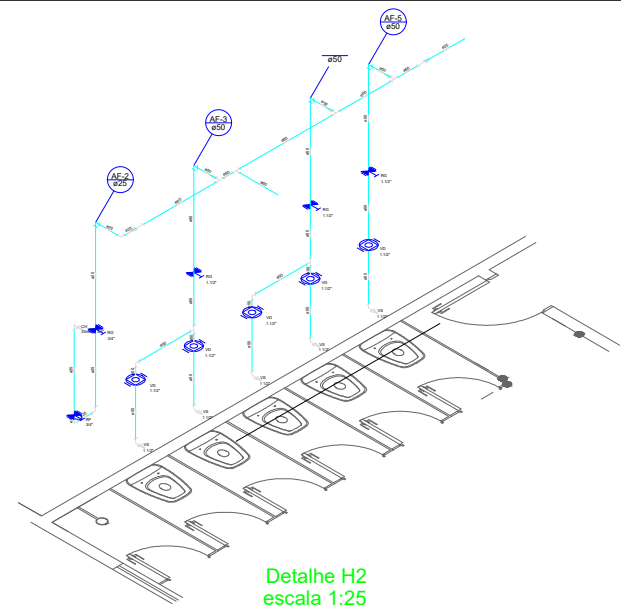
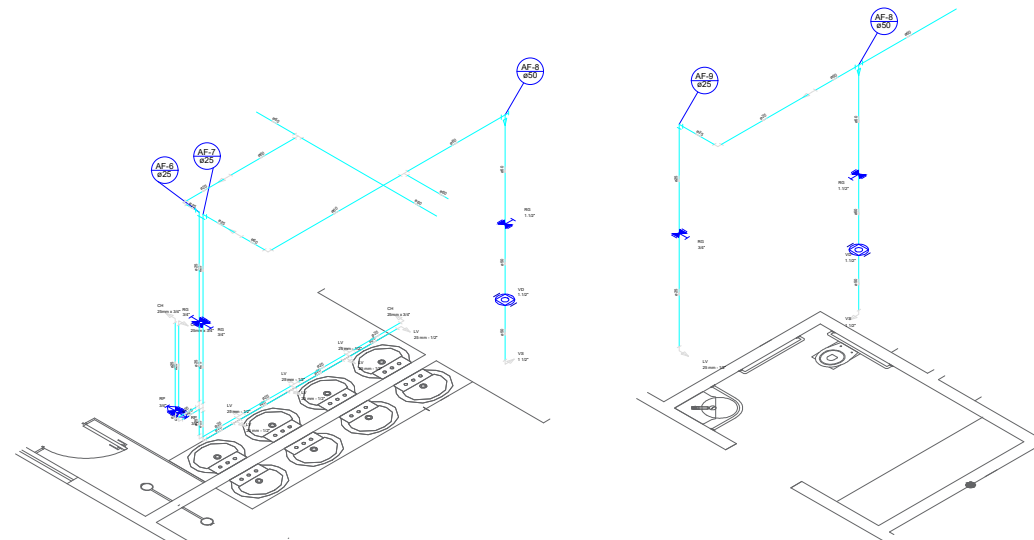


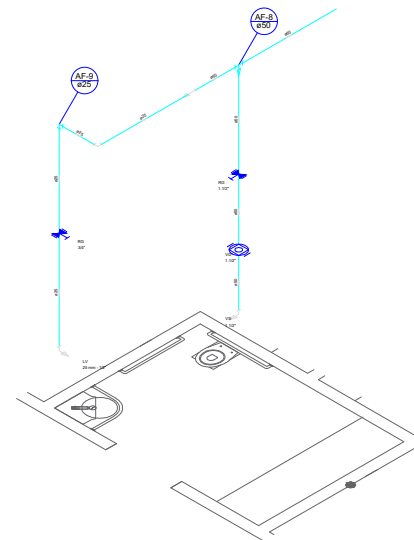
Detalhe H1
escala 1:25



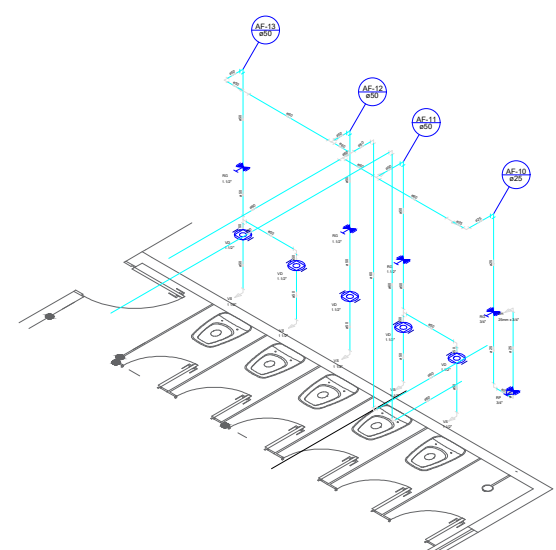
Detalhe H2
escala 1:25



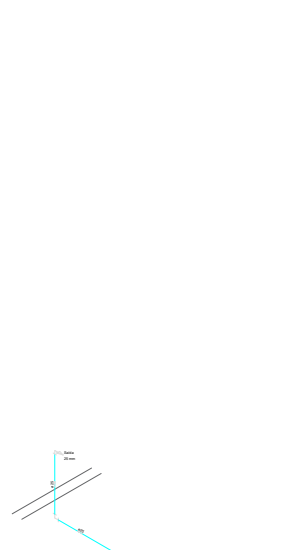
Detalhe H3
escala 1:25



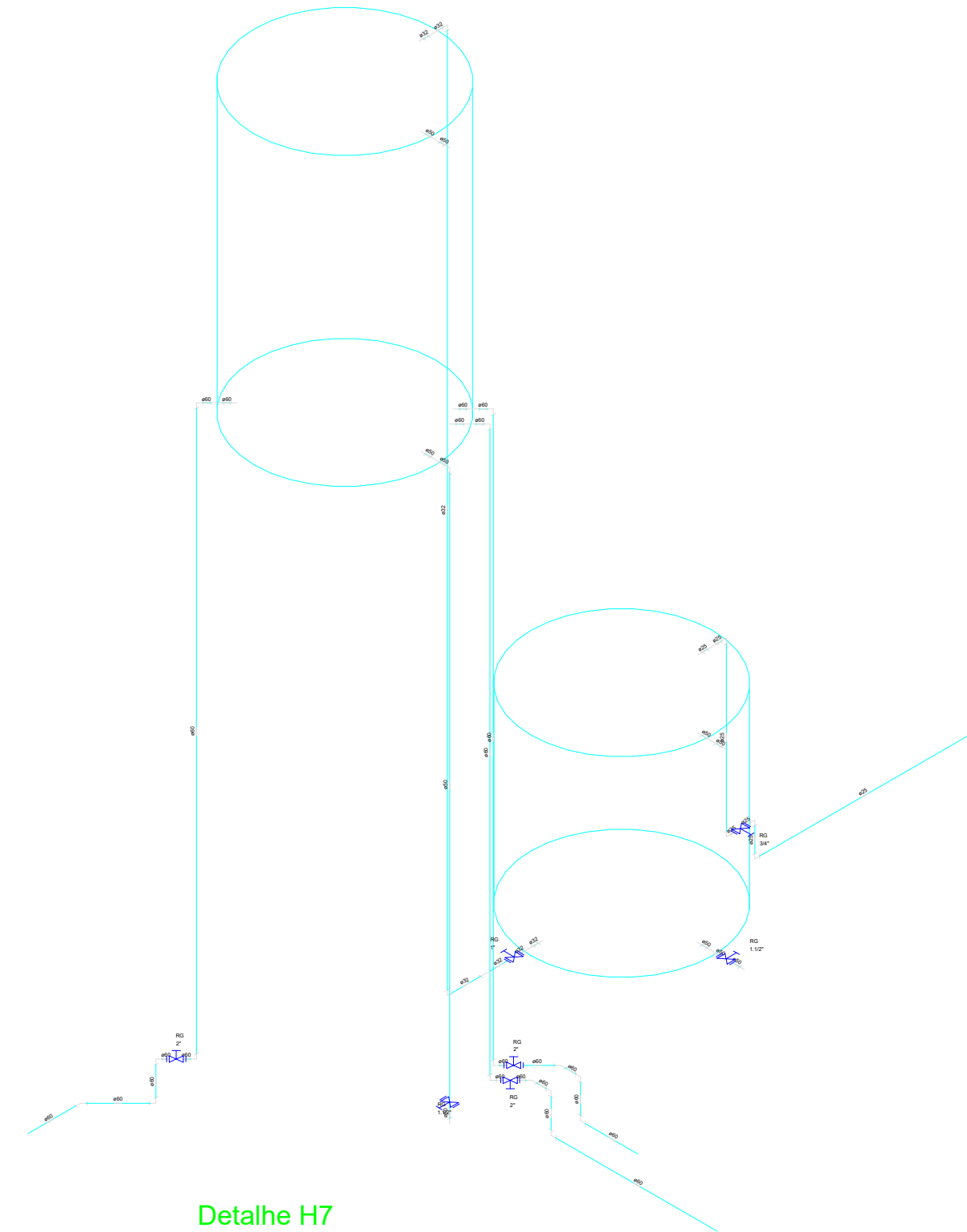
Detalhe H4
escala 1:25



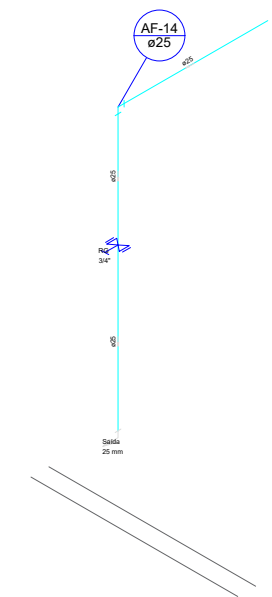
Detalhe H5
escala 1:25



Detalhe H6
escala 1:25



Detalhe H7
escala 1:25



Detalhe H8
escala 1:25



PREFEITURA MUNICIPAL DE VÁRZEA GRANDE
 Av. Castelo Branco, Espaço Municipal, 2500 - Centro Sul, Várzea Grande/MT
 CEP 78125-700 - Fone/Fax: 65 3688 8000
LOCALIZAÇÃO: RUA TRÊS MARIAS, S/N
 BAIRRO CANELAS - VÁRZEA GRANDE MT

PROJETO: PROJETO HIDROSSANITARIO
OBRA: AMPLIAÇÃO EMEB AIR ADDOR

DATA: JULHO/2022
UNIDADE: METRO

AUTOR DO PROJETO:
 GUILHERME SIMPLÍCIO DIAS
 ENGENHEIRO CIVIL CREA-MT 36575

FOLHA Nº:
 03/03